

# STC Background



April 2008

## **Overview**

The Semiconductor Test Consortium (STC) is the leading proponent of worldwide development and adoption of Open Test Standards. Open to all companies throughout the semiconductor supply chain with a vested interest in the test sector, the consortium is focused on providing value-added standards that deliver technical & economic benefits to the global semiconductor industry.

## **Consortium Goals**

1. Foster pre-competitive collaboration among all industry participants toward development of value-added standards for the industry.
2. Provide a set of tools to facilitate implementation of the standards in real products.
3. Foster industry wide participation; enable a broad and inclusive membership.
4. Focus on initiatives of most value to the members of the STC and the industry at large based on member and non-member feedback.
5. Establish new initiatives; drive membership based on value of the work being done and the contribution to the industry offered by the STC.

## **Organizational Structure**

The STC is structured as a not-for-profit corporation under the corporate laws of the state of California. The Articles of Incorporation define the legal, organizational setup and purpose of the corporation.

## **Governance**

The STC functions will be executed under the direction of the Board of Directors, executive director, and/or executive committee as prescribed by the STC Bylaws. The Bylaws also establish procedures and rules for the election of officers and the creation of specific working committees.

## **Financial Structure**

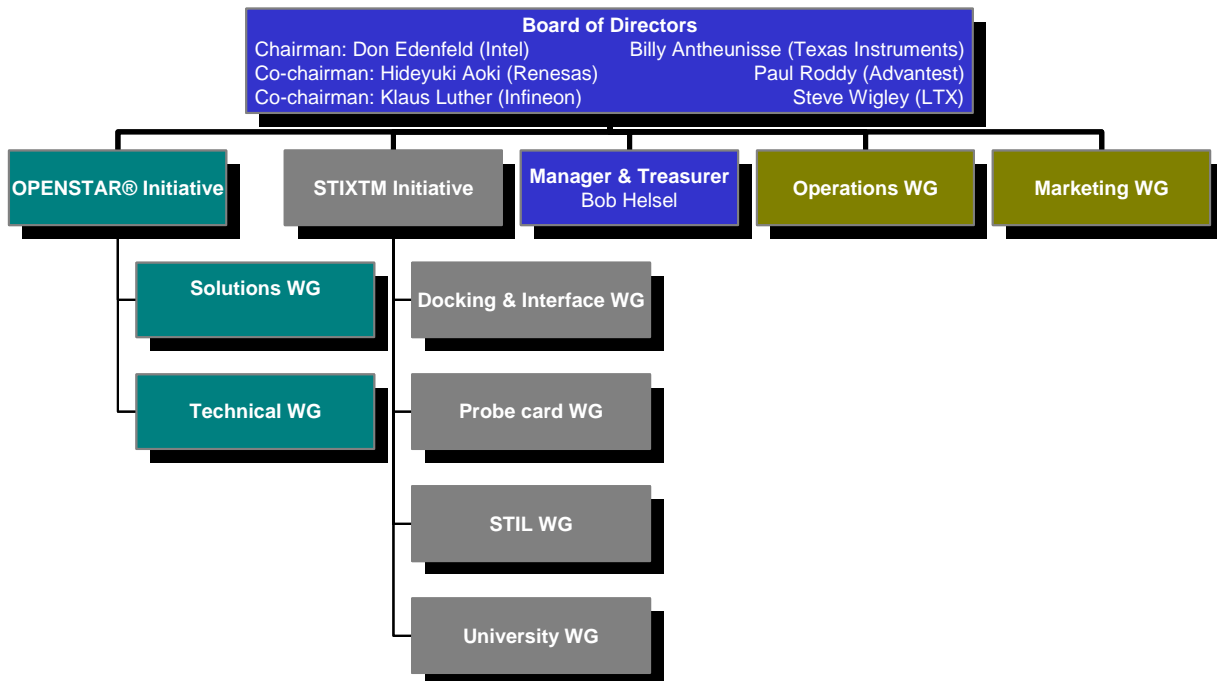
The STC operates as a not-for-profit corporation with operating funds derived from, but not limited to, membership fees, service revenues, grants/donations and licensing/royalty fees. The Bylaws fully document the revenue generating activities that are consistent with the overall mission of the STC.

## Organization

The STC is composed of member company and individuals dedicated to achieving the critical goals of the organization. The primary work of the Consortium is to be executed within the standing committees, which are to be constituted with general membership individuals. The main elements of the organization include:

- Board of Directors
- Standing Committees
  - ◆ Technical Working Groups
  - ◆ University Working Group
  - ◆ Operations Working Group
  - ◆ Marketing Working Group
- General Membership

## Organization Chart



## Contacts and Officers

### Headquarters

361 2nd Avenue, Suite 203  
PO Box 1016  
Niwot, CO 80544-1016

<http://www.semitest.org>

### Contact

Bob Helsel  
STC Manager  
Telephone: 303-652-1311  
Fax: 303-652-1444  
bhelsel@semitest.org

### Consortium Officers

Chairperson & Board Member  
Vice Chairperson & Board Member  
Vice Chairperson & Board Member

Don Edenfeld (Intel)  
Hideyuki Aoki (Renesas)  
Klaus Luther (Infineon Technologies)

Board Members

Billy Antheunisse (Texas Instruments)  
Paul Roddy (Advantest)  
Steve Wigley (LTX)

STC Manager & Treasurer

Bob Helsel (Bode Enterprises)

## Membership

The STC is open to a wide spectrum of relevant industry participants. The Bylaws define the membership rules and regulations including, but not limited to the following:

- Membership qualification and application procedures;
- Membership classes and voting rights;
- Member rights and obligations;
- Member non-disclosure and IP protection agreements;
- Membership fees; and
- Membership termination procedures.

<b>Corporate Members</b>	<b>End user</b>	<b>ATE vendor</b>	<b>Module vendor</b>	<b>Peripheral vendor</b>	<b>Foundry / Subcon</b>
Advantest		•			
Analog Devices	•				
BitifEye Digital Solutions			•		
ERS Electronic				•	
ESMO AG				•	
FormFactor				•	
From 30		•			
Fujitsu	•				
GuideTech			•		
Huber & Suhner				•	
Infineon Technologies	•				
Intel	•				
Interface Technologies				•	
Macquarie	•				
Matsushita Electric Industrial	•				
Matsushita Electric Works	•				
Microhandling GmbH				•	
Micronics Japan				•	
Molex Japan Co.				•	
Multitest				•	
Octavian			•		
Pintail Technologies			•		
Q-Star			•		
Rasco GmbH				•	
Reid-Ashman Mfg.				•	
Renesas	•				
Robert Bosch GmbH	•				
Rood Technology					•
Salland Engineering			•		
SEPTeurope			•		
Syswave					•
Tensolite				•	
Tokyo Electron				•	
Tokyo Seimitsu				•	
Tyco Electronics				•	
Vicor			•		
Wavecrest			•		
Wright Williams & Kelly			•		
<b>TOTAL</b>	<b>9</b>	<b>2</b>	<b>10</b>	<b>15</b>	<b>2</b>

### Individual/STIL Members

John Adams  
Billy Antheunisse  
Zhou Feng  
Hosam Haggag  
Peter Hirschmann  
Tom Jackson  
Gerhard Kessler  
Naoya Koiso  
Nagahiro Nakamura  
Paul Reuter  
Ed Smith  
Tony Taylor  
Stefan Thurmaier  
Steve Wigley

### University Members

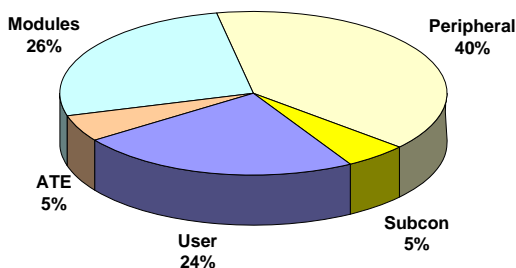
Prof. Abraham - Univ. of Texas at Austin  
Prof. Al-Ars - Delft Univ.  
Prof. Asada - Tokyo Univ.  
Prof. Asakawa - Tokai Univ.  
Assoc. Prof. Bowhars - Merrimack College  
Prof. Chakrabarty - Duke Univ.  
Assoc. Prof. Chatterjee - Georgia Tech  
Prof. Demidenko - Monash Univ. Malaysia  
Prof. Eisenstadt - Univ. of Florida  
Prof. Gao - Tsinghua Univ.  
Assoc. Prof. Hashizume - Tokushima Univ.  
Prof. Hellebrand - Univ. of Paderborn

### University Members (cont.)

Assoc. Prof. Ichihara - Hiroshima City Univ.  
Prof. Ivanov - Univ. of British Columbia  
Prof. Prof. Iwasaki - Tokyo Metropolitan Univ.  
Prof. Jervan - Tallinn Univ. of Technology  
Dr. Johnson - Univ. of Durham  
Prof. Jung - Texas A & M  
Prof. Kajihara - Kyushu Inst. of Technology  
Prof. Kinoshita - Osaka Gakuin Univ.  
Prof. Kobayashi - Gunma Univ.  
Prof. Larsson - Univ. of Linkopings  
Prof. Margala - Univ. of Rochester  
Prof. Margaria - Univ. of Gottingen  
Assoc. Prof. Nagata - Kobe Univ.  
Prof. Nakamae - Osaka Univ.  
Prof. Nanya - Tokyo Univ.  
Prof. Nelson - Auburn Univ.  
Assoc. Prof. Osseiran - Edith Cowan Univ.  
Prof. Otsuka - Meisei Univ.  
Prof. Papalias - San Jose State  
Prof. Robinson - Univ. of Durham  
Prof. Sanada - Kochi Univ.  
Prof. Singh - Auburn Univ.  
Prof. Soma - Univ. of Washington  
Prof. Tada - Tokushima Bunri Univ.  
Prof. Takahashi - Ehime Univ.  
Prof. Takamatsu - Ehime Univ.  
Prof. Wen - Kyushu Inst. of Technology  
Prof. Wunderlich - Univ. of Stuttgart  
Prof. Xu - Tsinghua Univ.

## Membership Profile

Corporate Demographics



Corporate Demographics by Region  
(38 Companies)

